

Fifeville Neighborhood Revitalization Initiative

307 5th St. SW

before



Fifeville Neighborhood Revitalization Initiative



second floor, rehab work begun

Fifeville Neighborhood Revitalization Initiative



water damage, west wall



water-damaged stud and beam, detail

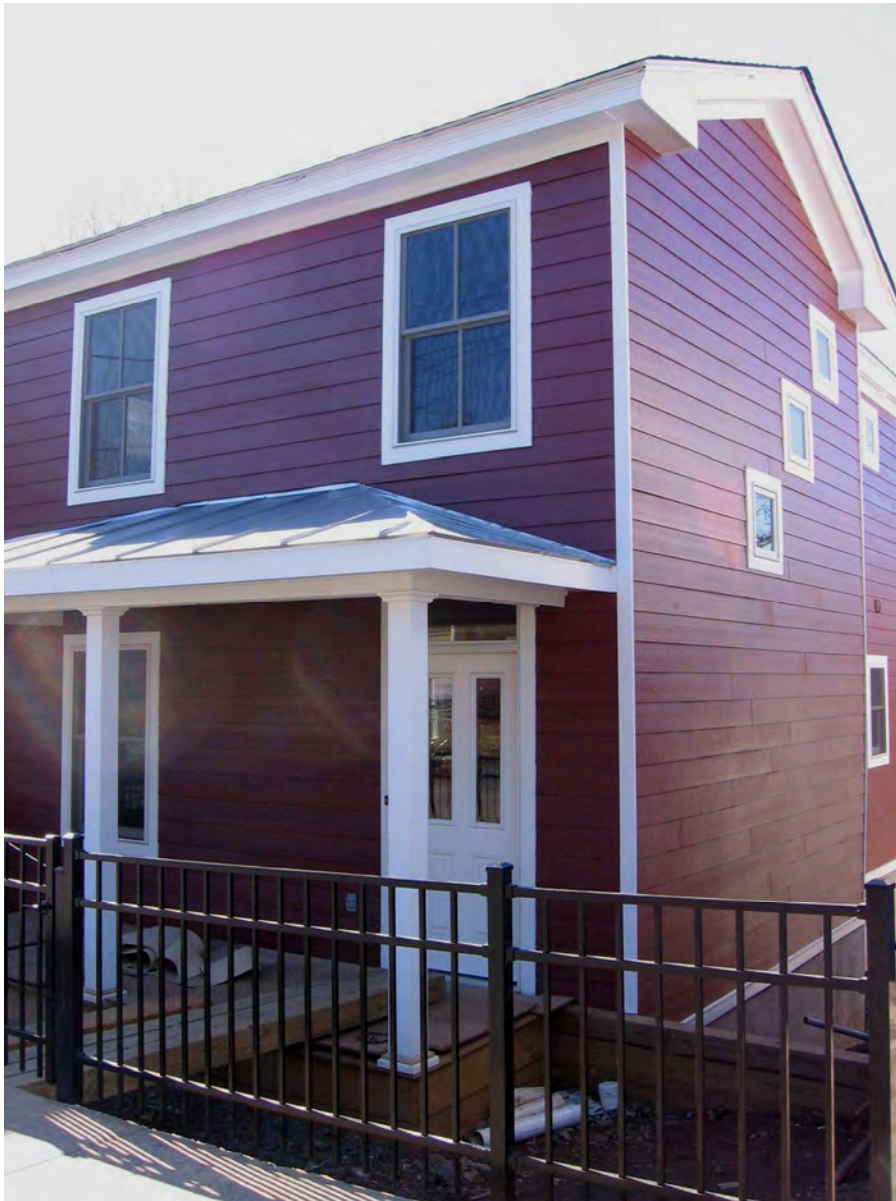
Fifeville Neighborhood Revitalization Initiative

307 5th St. SW

after



Fifeville Neighborhood Revitalization Initiative



Hardiplank siding, Pella aluminum clad windows



refinished heart pine flooring, Pella fiberglass entry



all wood cabinets, low flow faucet

Fifeville Neighborhood Revitalization Initiative



all new, Energy Star appliances



low flow faucets and toilet, Marmoleum flooring



bedrooms with wood floors and fans

after

225 4th St. SW



Fifeville Neighborhood Revitalization Initiative



Hardiplank siding, thermal pane windows, 35 yr shingles



Energy Star appliances, Marmoleum flooring



low flow faucets and toilet, Marmoleum flooring

Fifeville Neighborhood Revitalization Initiative

233 4th St. SW

before



Fifeville Neighborhood Revitalization Initiative



bathroom, first floor



stair and interior wall



Fifeville Neighborhood Revitalization Initiative



plumbing, basement



bedroom, basement



interior wall, second floor



bedroom wallpaper, second floor

Fifeville Neighborhood Revitalization Initiative



second floor, rehab work begun



window, second floor

Fifeville Neighborhood Revitalization Initiative

233 4th St. SW

after



Fifeville Neighborhood Revitalization Initiative



brick pointed, sealed and painted, new thermal pane windows



basement half bath, low flow toilet, faucets, laundry



Energy Star appliances, all wood cabinets, Marmoleum flooring

SmithReaves EcoMod

before



Fifeville Neighborhood Revitalization Initiative



raising and reframing the historic Smith-Reaves house



Fifeville Neighborhood Revitalization Initiative

SmithReaves EcoMod

after



Fifeville Neighborhood Revitalization Initiative



Smith- Reaves Historic Rehab and Addition

- Hardiplank siding
- Pella aluminum clad thermal-pane windows
- 35 year three-tab shingles
- Planted green roof on addition
- Borate treated decking lumber
- Porous concrete parking pad

EcoMod Detached Rental Unit

- Thermasteel walls and roof joist
- Hardiplank siding
- Pella aluminum clad thermal-pane windows
- Planted green roof
- Borate treated decking lumber



Fifeville Neighborhood Revitalization Initiative



Smith-Reaves Historic Rehab

- 15 SEER HVAC
- Energy Star Appliances
- Solar Hot Water System
- Recycled Wood Flooring
- Cork and Ceramic Tile
- Low VOC Paints and Stains

EcoMod Detached Rental Unit

- LEED Platinum Certification
- Energy Star Appliances
- On Demand Water System
- Cork and Ceramic Tile
- Low VOC Paints and Stains

